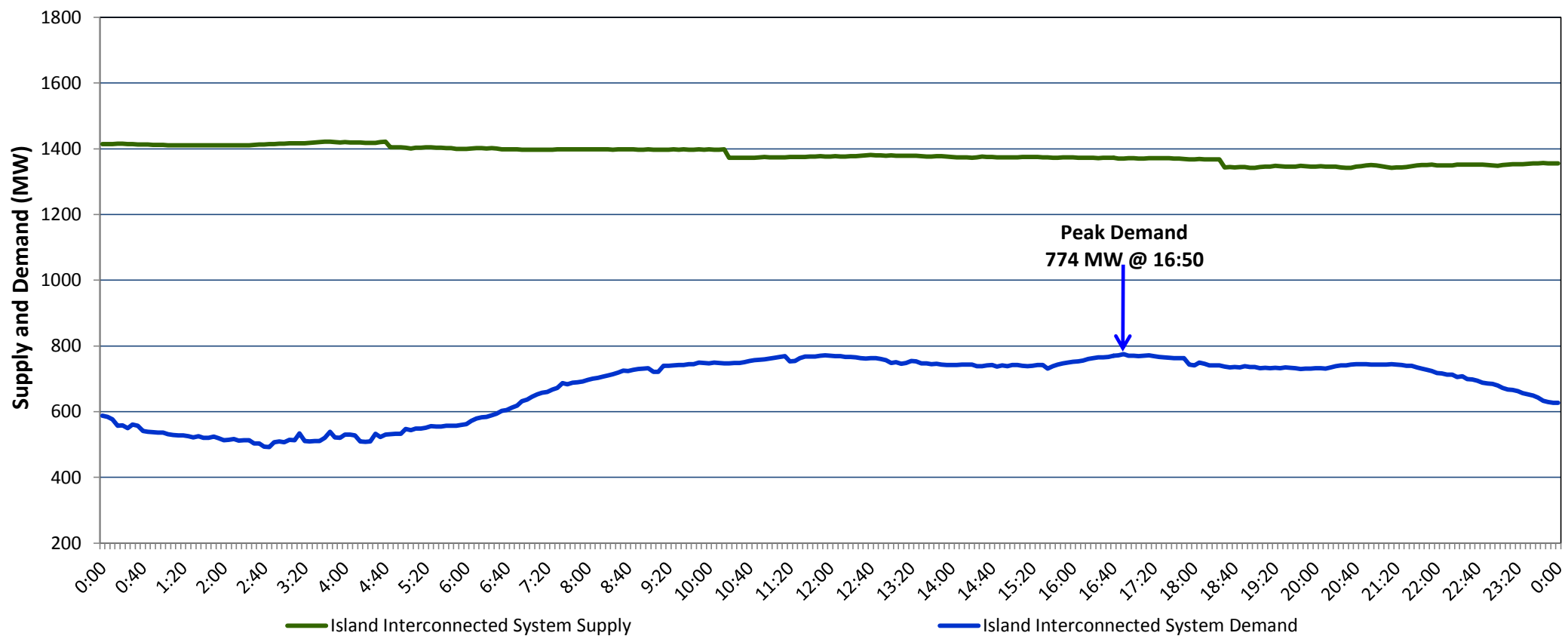


Newfoundland Labrador Hydro (NLH)  
Supply and Demand Status Report Filed Thursday, August 17, 2017

Section 1  
Island Interconnected System Supply and Demand  
Actual 24 Hour System Performance For Wednesday, August 16, 2017



Supply Notes For August 16, 2017

- 1,2
- A

As of 1858 hours, June 22, 2017, Stephenville Gas Turbine available at 25 MW (50 MW).
- B

As of 0938 hours, June 23, 2017, Holyrood Unit 1 unavailable due to planned outage 120 MW (170 MW).
- C

As of 0827 hours, July 31, 2017, Holyrood Unit 2 unavailable due to planned outage 165 MW (170 MW).
- D

As of 0827 hours, July 31, 2017, Holyrood Unit 3 unavailable due to planned outage (150 MW).
- E

As of 1250 hours, August 06, 2017, Upper Salmon Unit unavailable due to planned outage (84 MW).
- F

At 1020 hours, August 16, 2017, Hardwoods Gas Turbine available at 25 MW (50 MW).
- G

At 1826 hours, August 16, 2017, Hardwoods Gas Turbine unavailable (50 MW).

Section 2  
Island Interconnected Supply and Demand

Thu, Aug 17, 2017			Seven-Day Forecast	Temperature (°C)		Island System Daily Peak Demand (MW)
				Morning	Evening	
Island System Outlook <sup>3</sup>						Forecast
Available Island System Supply: <sup>5</sup>	1,320	MW	Thursday, August 17, 2017	16	17	805
NLH Generation: <sup>4</sup>	1,045	MW	Friday, August 18, 2017	14	12	835
NLH Power Purchases: <sup>6</sup>	90	MW	Saturday, August 19, 2017	12	13	800
Other Island Generation:	185	MW	Sunday, August 20, 2017	14	15	770
Current St. John's Temperature:	14	°C	Monday, August 21, 2017	16	18	805
Current St. John's Windchill:	N/A	°C	Tuesday, August 22, 2017	16	13	795
7-Day Island Peak Demand Forecast:	835	MW	Wednesday, August 23, 2017	16	15	795

Supply Notes For August 17, 2017

- 3
- Notes:
1.

Generation outages for running and corrective maintenance are included. These are not unusual for power system operations. They generally do not impact customer supply. The power system operators schedule outages to system equipment whenever possible to coincide with periods when customer demands are low and sufficient supply reserves are available. However, from time to time equipment outages are necessary and reserves may be impacted.
2.

Due to the Island Interconnected System being isolated from the larger North American grid, when there is a sudden loss of large generating units some customer's load must be interrupted for short periods to bring generation output equal to customer demand. This automatic action of power system protection, referred to as under frequency load shedding, is necessary to ensure the integrity and reliability of system equipment. Under frequency events typically occur 5 to 8 times per year on the Island Interconnected System and the resultant customer load interruptions are generally less than 30 minutes.
3.

As of 0800 Hours.
4.

Gross output including station service at Holyrood (24.5 MW) and improved NLH hydraulic output due to water levels (35 MW).
5.

Gross output from all Island sources (including Note 4).
6.

NLH Power Purchases include: CBPP Co-Gen, Nalcor Exploits, Rattle Brook, Star Lake, Vale capacity assistance (when applicable), and Wind Generation.

Section 3  
Island Peak Demand Information  
Previous Day Actual Peak and Current Day Forecast Peak

Wed, Aug 16, 2017	Actual Island Peak Demand <sup>8</sup>	16:50	774 MW
Thu, Aug 17, 2017	Forecast Island Peak Demand		805 MW

Notes:

8. Island Demand is supplied by NLH generation and purchases, plus generation owned and operated by Newfoundland Power and Corner Brook Pulp & Paper (Deer Lake Power, DLP).